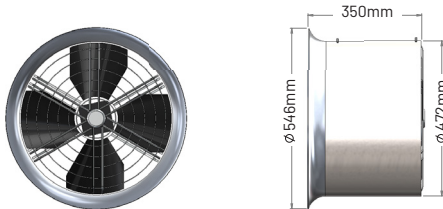


# CIRCULATION FANS

Circulation fans, or otherwise commonly known as stirrers or HAF (horizontal air flow) fans are one of the best additions to any commercial greenhouse. The use of correctly positioned circulation fans will assist with good air movement throughout the greenhouse and around the plants, reducing 'hot spots' and fungal diseases. With increased air movement plant transpiration and CO2 availability is improved which increases leaf cooling, nutrient uptake and improves plant health.

Winter Gardenz Circulation fans are made from quality materials and incorporate a 'low noise', energy efficient, 150W electric motor which consumes very little electricity. They are designed to be suspended from the greenhouse structure using the mounting points provided on the fans shroud.

For a relatively minimal investment circulation fans provide significant benefits and value to the grower.



## FAN SPECIFICATIONS

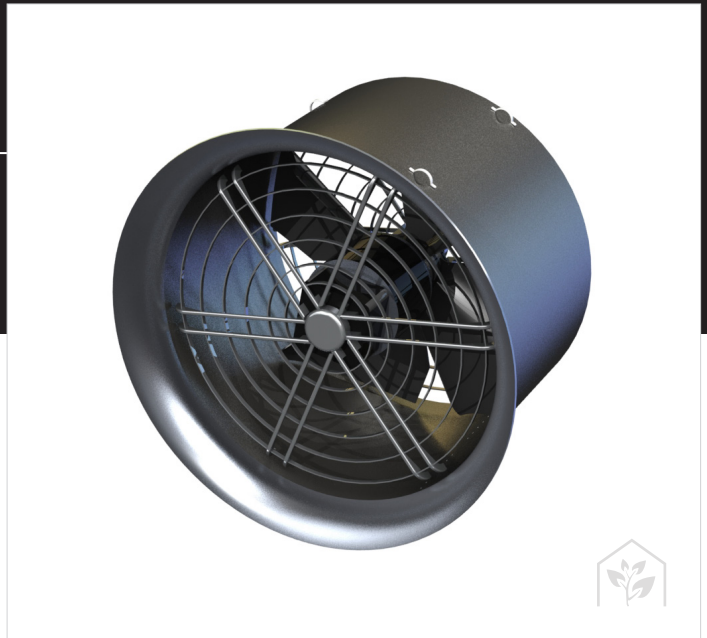
### DIMENSIONS & CAPACITY

DIAMETER	472mm (shroud), 546mm (max at cowling inlet)
LENGTH	350mm
WEIGHT	11.6kg
MOTOR	220V Single Phase (0.8amp) 150W
INGRESS PROTECTION	IP55
RPM	700, 800 and 900rpm
OUTPUT	4700m <sup>3</sup> per hour
MAX THROW	Aprox 45m

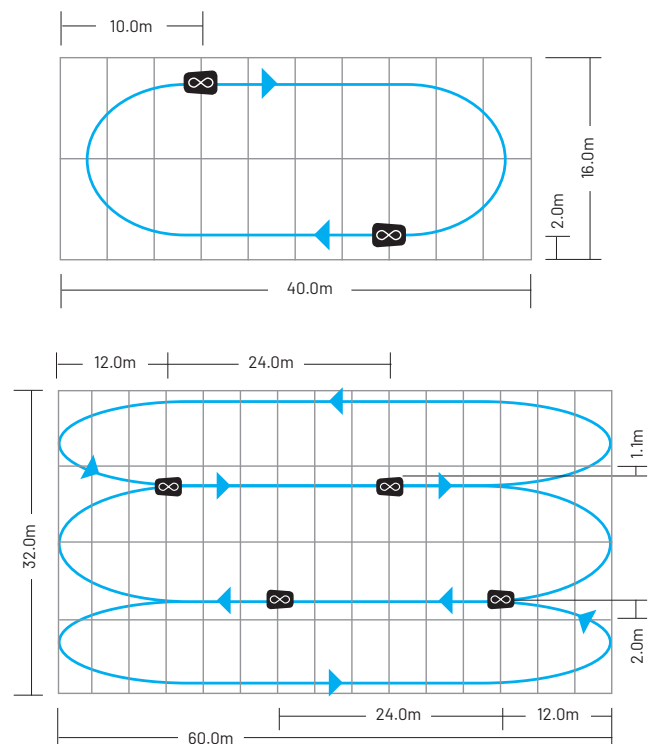
### MATERIALS

SHROUD	Stainless steel
COWLING	Marine grade aluminium
SAFETY GUARDS	Stainless steel
FASTENERS	Stainless steel nuts and bolts. Aluminium rivets.
BLADES	Plastic
HOOKS	Stainless

Sizes, dimensions and information is accurate at the time of publishing.



## TYPICAL FAN PLACEMENT



Circulation fans are designed to stir the air throughout the greenhouse. Position the fans above head height and aprox 3-10m from the gable end walls and ideally 2-8m from the side walls. For greenhouses longer than 45m use an additional fan (inline) to assist moving the air along the entire length of the area. As a general rule allow one circulation fan per 350m<sup>2</sup> of greenhouse area.

For more information, pricing and availability details please contact your Winter Gardenz representative.