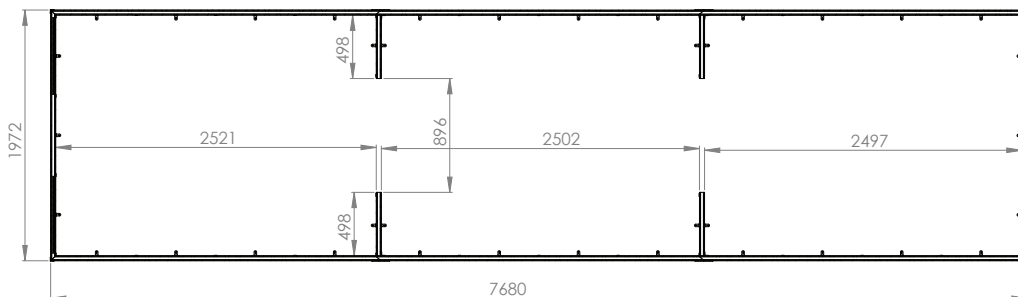


## Please read first

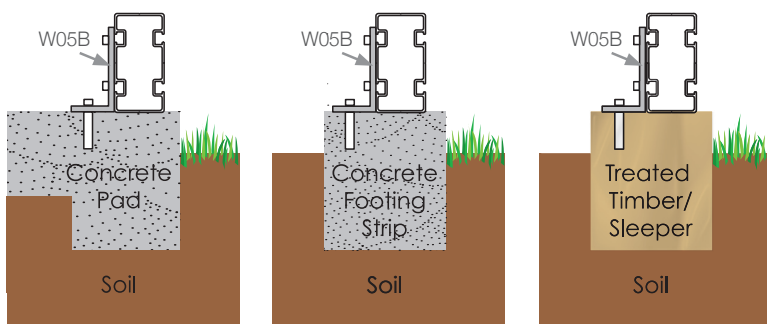
A well built greenhouse depends heavily on the foundations it is attached too. If the foundations are not level or are out-of-square, then the greenhouse will never sit correctly, and you will encounter difficulties in not only assembling the greenhouse, but you may also discover the doors and vents do not operate correctly. **Please spend the time and effort in making sure you have provided a good, solid foundation that is level and square.**

In this kitset we have provided foundation mounting brackets (W05B's) that will enable you to attach the aluminium greenhouse base to your choice of either a timber or concrete foundation. These brackets are designed to be attached in even spacings around the perimeter of the greenhouse base, and provide anchoring points for the greenhouse to be attached to its foundations by using either bolts, screws or dynabolts (not included).

You will need to make either a timber or concrete pad or footing for the aluminium greenhouse base to sit upon. The dimensions of the aluminium greenhouse base are as follows...



Here is a range of methods for utilising the provided foundation mounting brackets (W05B's) to connect the aluminium greenhouse base to your timber or concrete foundation. The choice is yours.



### ATTENTION

Double check your foundations are set level and square. Measure the diagonal lengths from corner to corner ensuring they are the same.

### ATTENTION

Make sure there are no air gaps below the bottom of the greenhouse, and that your foundations are set securely in the ground, especially if you are in a windy area.