

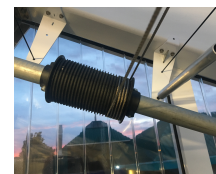
## RETRACATABLE THERMAL SYSTEMS

Retractable thermal screens (also known as shade screens or climate screens) are the most cost effective and energy efficient means to reduce greenhouse energy costs.

The system will close when the light levels are excessive and open (retract) when the light is limited. This system will also reduce dew drop, heat loss and provide a more constant and comfortable greenhouse environment.

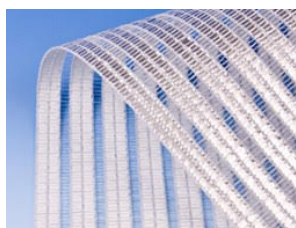
The system is driven by a motorised drive system and can be operated either manually or connected to an environmental control system.

- **Lifespan from 8 to 10 years**
- **Reduces heating costs by 20 - 70%**
- **Stabilises the climate in your greenhouse**
- **Different models to select the best solution for your crops**
- **Reduces chances on fungal diseases**



### OPEN WEAVE

Designed for a hot summer environment, the open weave allows heat to rise out of the greenhouse.



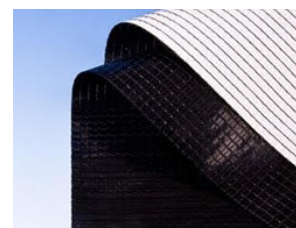
### CLOSED WEAVE

Designed for a cooler climate, the closed weave helps keep heat in the greenhouse.



### BLACKOUT

Blackout screens are used to shorten or lengthen the day by controlling light coming in.



Most greenhouses are designed with good natural roof ventilation. If you are growing in a hot summer environment, you need **Open Weave Screens**. These screens have gaps between the aluminium strips that allow warm air to rise through them, while the strips reflect unwanted light back out of the greenhouse. These screens still give significant energy savings of up to 30%.

If you are growing in a cooler climate and have high heating costs or if you need to modify the day length, you need **Closed Weave Screens**. These screens have a clear plastic strip between the aluminium strips that helps trap heat, while the aluminium strips reflect unwanted light back out of the greenhouse. These screens give very high energy savings of up to 70%.

**Blackout Screens** are used to shorten or lengthen the day for flowers like Chrysanthemum and other crops. We can also install retractable/roll-up blackout screens against the sidewalls of most greenhouses, if required.

#### OPEN SCREEN

Type	XLS 10	XLS 13	XLS 14	XLS 15	XLS 16	XLS 17	XLS 18
Shade (Direct)	17%	30%	44%	54%	66%	76%	86%
Energy Savings	47%	49%	52%	57%	62%	67%	72%

#### CLOSED SCREEN

Type	XLS 12F	XLS 13	XLS 14	XLS 15	XLS 16	XLS 17	XLS 18
Shade (Direct)	22%	32%	38%	50%	61%	73%	86%
Energy Savings	47%	49%	52%	57%	62%	67%	72%

#### BLACKOUT SCREEN

Obscura
99.9%
75%

If you want to learn more about Winter Gardenz thermal screen systems take a look at our website or contact your Winter Gardenz representative.

PHONE 0800 946 837  
WINTERGARDENZ.CO.NZ